



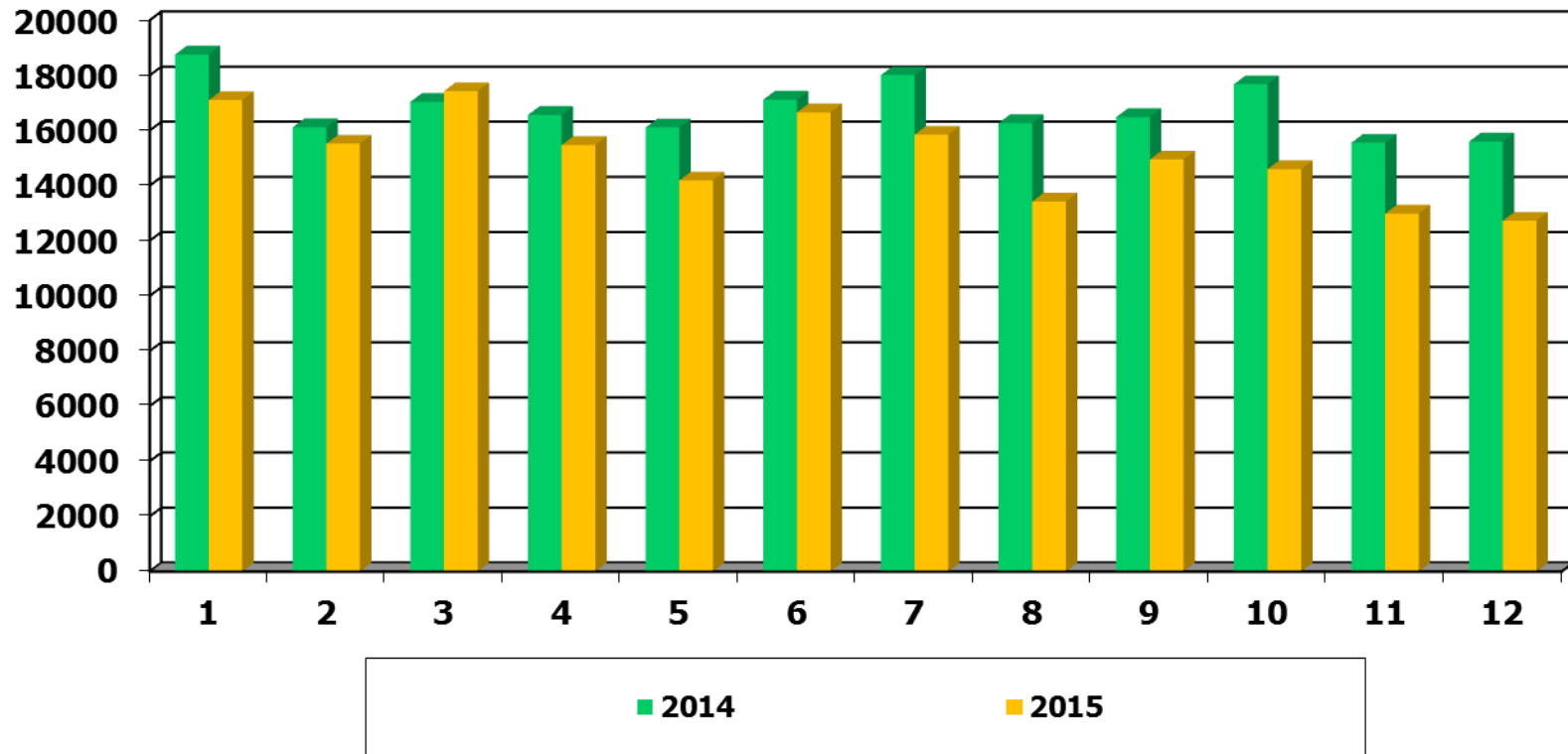
2015-2018

DICIEMBRE 2015

Indicadores de Servicios Médicos

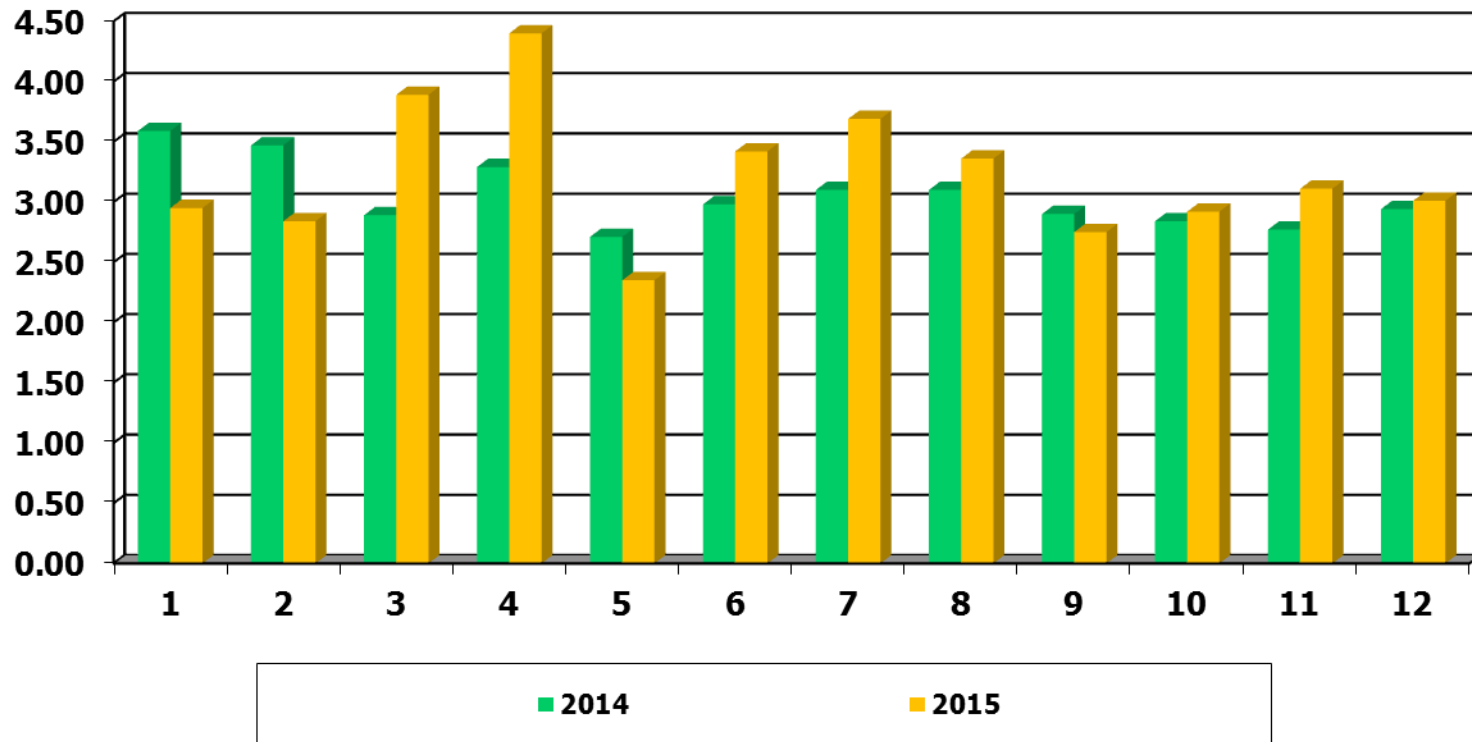
NUMERO DE CONSULTAS REALIZADAS

CONSULTA /MESES	ENE	FEB	MAR	ABR	MAY	JUN	JUL	AGO	SEP	OCT	NOV	DIC	TOTAL	Prom Mensual
2014	18,751	16,114	17,037	16,564	16,107	17,117	18,009	16,266	16,484	17,676	15,557	15,600	201,282	16,774
2015	17,098	15,520	17,425	15,470	14,189	16,655	15,848	13,419	14,948	14,595	12,985	12,726	180,878	15,073



DIAS DE ESTANCIA HOSPITALARIA

%Estancias/Mes	Ene	Feb	Mar	Abr	May	Jun	Jul	Ago	Sep	Oct	Nov	Dic	Total	Prom Mensual
2014	3.59	3.47	2.89	3.29	2.71	2.98	3.10	3.10	2.90	2.84	2.77	2.94	36.58	3.05
2015	2.95	2.84	3.89	4.4	2.35	3.42	3.69	3.36	2.75	2.92	3.11	3.01	38.69	3.22



NUMERO DE CONSULTAS EN URGENCIAS

Consulta/Meses	Ene	Feb	Mar	Abr	May	Jun	Jul	Ago	Sep	Oct	Nov	Dic	Total	Prom Mensual
2014	1,478	1,204	1,392	1,183	1,417	1,392	1,324	1,232	1,441	1,761	1,692	1,726	17,242	1,437
2015	1,509	1,397	1,722	1,509	1,817	1,630	1,357	1,279	1,367	1,331	1,318	1,400	17,636	1,470

